



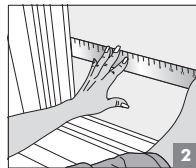
ENERGY FILM

INSULATE YOUR WINDOWS

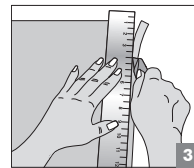
Application Instructions



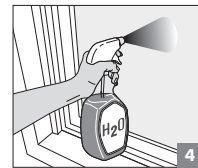
Clean



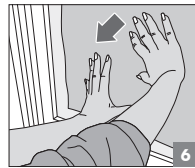
Measure Window



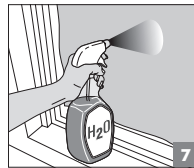
Trim



Spray Glass



Apply



Spray Film



Squeegee

Important: Optical clarity will significantly improve over 2 to 3 days as the water used in the application process evaporates.

You will need:

Squeegee (included)
Window cleaner

Measuring tape
Utility Knife
Liquid Soap

Straight Edge
Spray bottle
Paper Towels

Clean Glass. Using glass cleaner, thoroughly remove any dirt or debris from the window. A successful application will depend on a completely clean glass surface. A razor blade may be required to completely clean the surface of the glass.

Measure window. Measure inside of all window gaskets. It is recommended that a 1/16" margin exist between the film and the window frame/gaskets.

Trim Film. Trim film on a smooth, flat surface. Use a straight edge and utility knife for best results.

Wet Glass. Mix a couple of drops of liquid soap in a spray bottle with cold water and thoroughly wet interior window. Applying a generous amount of the water/soap mixture will allow the film to slide into the proper position with greater ease. Protect surrounding areas with a drop cloth or towel.

Install Film. Position film onto wet interior of the window. The soft pliable vinyl surface should face the glass. This is the side facing the paper liner. Film should be easy to slide into place. If not, peel back from window and add more water/soap mixture. When film is in place, wet the exposed side of the film. This step is necessary to allow the squeegee to glide over the film and remove all air bubbles and water. Squeegee from the center of the film and work your way to the edges. Do not allow the edge of the film to be in contact with the window frame. This may cause the film to lift from the edges.

A final trim may be necessary if film comes in contact with window frame, rubber gaskets, paint, etc.

Removal. Energy Film does not use adhesives and is easily removed. Slowly peel away from the window starting from the corner.

Helpful Hints:

Optical clarity will improve over 2-3 days as the water used in the application process evaporates.

Use plenty of the water/soap mixture

If there are slight scratches or a "fogginess" on the film, use a hair dryer to gently blow warm air over the film. The heat from the hair dryer will help clear up any imperfections. This is best used 2-3 days after the water has evaporated.

Use factory edges whenever possible when matching seams together.

During application squeegee towards the seam.

Match panels together to cover any size window.

For best results do not apply Energy Film on hot glass.

When installing the larger film, two people may be required to help position film on the window.

Energy Film will adhere to a clean, smooth glass surface. The product will not adhere to frosted or textured glass.

Some window manufacturer's warranties are voided when a window film is applied. Window film does not break glass. However, it can reveal or accelerate an inherent defect that is in the glass. Occurrences of breakage are rare.